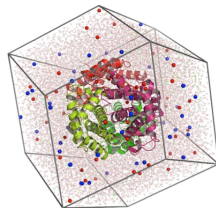
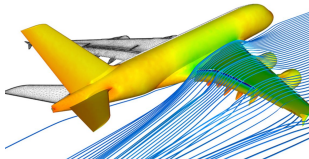
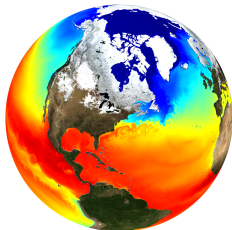


# Computational Science Track



Students can earn a BS in Math within the *Computational Science track* by completing certain Math and ICS courses that emphasize *modeling*, *simulation*, and *differential equations* while fulfilling the usual Math BS requirements.

# Computational Science Track

## Requirements for MATH BS, Computational Science Track

Students must complete PHYS 170/170L and PHYS 272/272L, as well as MATH 244 or 253A, and must complete 30 credit hours in mathematics courses numbered between 300 to 479 and 10 credit hours in related ICS courses including the following:

- MATH 304, 305, 307 or 311, 321, 331, 402, 407, 411, 414
- ICS 211, 212, 484
- 6 credit hours in writing-intensive mathematics courses
- 12 credit hours in mathematics courses numbered above 400
- Students must also complete MATH 480 (CR/NC) (final year)

MATH 304: Modeling I

MATH 305: Modeling II

MATH 402: Partial Diff. Eqs.

MATH 407: Numerical Analysis

MATH 411: Linear Algebra

MATH 414: Optimization

ICS 211: Intro to Computer Sci.

ICS 212: Program Structure

ICS 484: Data Visualization

# Tutors and Graders

***Tutors*** for the Math department earn money by helping students in calculus and pre-calculus courses.

- Tutors typically work 5-10 hours per week.
- Tutoring takes place at the Learning Emporium in Bilger 209.
- Minimum qualifications: MATH 243 or MATH 252A.

***Graders*** earn money grading assignments for certain courses like MATH 243, 244, 302, 307, and 372.

- Graders typically work either 4 hours per week (if grading for one section) or 8 hours per week (if grading for two sections).

Interested in becoming a tutor or grader? Contact Evan Gawlik (egawlik@hawaii.edu).