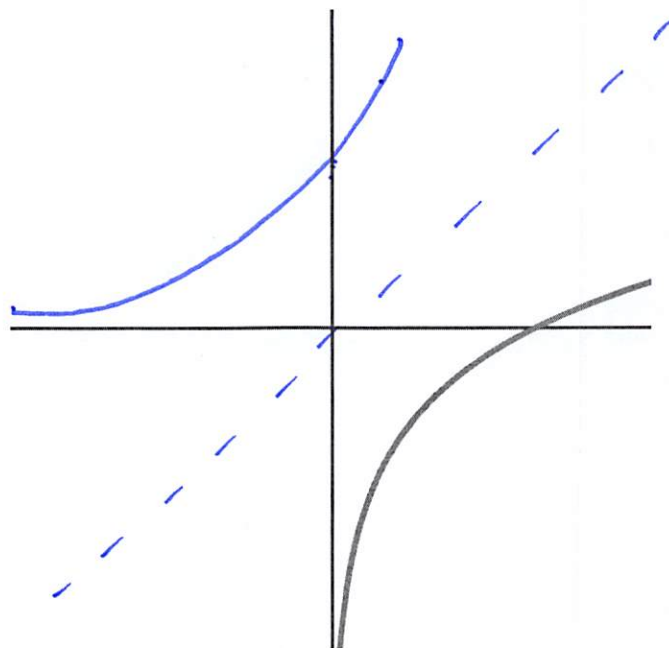


Name:

Solutions

Section: 5 6 9 10

1. Graph the inverse function on the same plot.



2. Find the inverse of $f(x) = 1 + \sqrt[5]{3+2x}$.

$$y = 1 + (3+2x)^{1/5}$$

$$x = 1 + (3+2y)^{1/5}$$

$$x-1 = (3+2y)^{1/5}$$

$$(x-1)^5 = 3+2y$$

$$2y = (x-1)^5 - 3$$

$$y = \frac{(x-1)^5 - 3}{2}$$